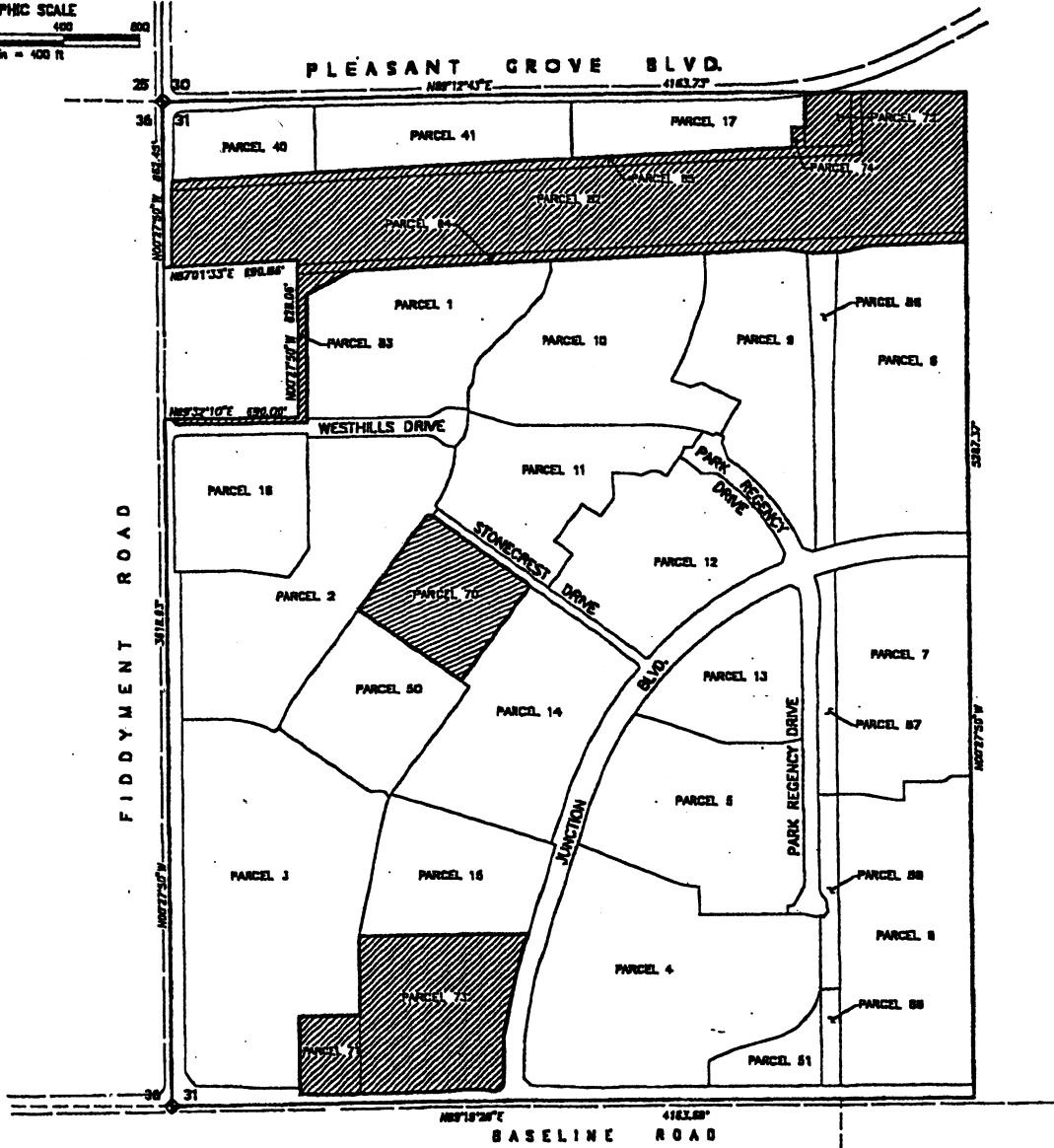
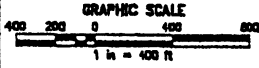
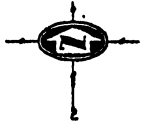


AMENDED PROPOSED BOUNDARIES  
**WOODCREEK WEST COMMUNITY FACILITIES DISTRICT NO. 2**  
**NORTH ROSEVILLE SPECIFIC PLAN PHASE 2**  
 A PORTION OF SECTION 31, T. 11 N., R. 6 E., M.D.M.  
 CITY OF ROSEVILLE, PLACER COUNTY, CALIFORNIA  
 AUGUST, 2000 SCALE: 1"=400'  
 MORTON & PITALO, INC.  
 SHEET 1 OF 1 SHEETS



**LEGEND**

- NOT A PART OF THIS COMMUNITY FACILITIES DISTRICT
- COMMUNITY FACILITIES DISTRICT BOUNDARY

**CITY CLERK'S STATEMENT**

I HEREBY CERTIFY THAT THIS MAP WAS APPROVED BY THE CITY COUNCIL OF THE CITY OF ROSEVILLE, PLACER COUNTY, CALIFORNIA ON THIS \_\_\_\_\_ DAY OF \_\_\_\_\_, 2000.

CAROLYN FARRINGTON, CITY CLERK  
 CITY OF ROSEVILLE  
 PLACER COUNTY, CALIFORNIA

**CITY COUNCIL'S STATEMENT**

I HEREBY CERTIFY THAT THIS MAP WAS APPROVED BY THE CITY COUNCIL OF THE CITY OF ROSEVILLE AT A REGULAR MEETING THEREOF, HELD ON THE \_\_\_\_\_ DAY OF \_\_\_\_\_, 2000, BY ITS RESOLUTION NO. \_\_\_\_\_

CAROLYN FARRINGTON, CITY CLERK  
 CITY OF ROSEVILLE  
 PLACER COUNTY, CALIFORNIA

**RECORDER'S STATEMENT**

I FILED THIS \_\_\_\_\_ DAY OF \_\_\_\_\_, 2000, AT THE HOUR OF \_\_\_\_\_ O'CLOCK IN BOOK \_\_\_\_\_ OF MAPS OF ASSESSMENT AND COMMUNITY FACILITIES DISTRICTS AT PAGE \_\_\_\_\_ IN THE OFFICE OF THE COUNTY RECORDER OF THE COUNTY OF PLACER, STATE OF CALIFORNIA.

\_\_\_\_\_  
 COUNTY RECORDER  
 COUNTY OF PLACER

BOOK \_\_\_\_\_ OF COMMUNITY FACILITIES DISTRICTS, PAGE \_\_\_\_\_