

GROUNDWATER MANAGEMENT PLAN

Satisfying multiple stakeholder needs and objectives...



Roseville Production Well Pump Station

What is the goal of the WPCGMP?

The over-arching goal of the plan is *“to maintain the quality and ensure the long term availability of groundwater to meet backup, emergency, and peak demands without adversely affecting other groundwater uses within the WPCGMP area.”*

Who is preparing the WPCGMP?

Preparation of the WPCGMP is a collaborative effort between the City of Roseville (Roseville), Placer County Water Agency (PCWA), and the City of Lincoln (Lincoln). Historically, these plan participants have taken leadership roles in many water planning efforts. In the case of the WPCGMP, these plan participants are building upon previous groundwater management efforts including GMPs previously completed by Lincoln, Roseville, and PCWA.

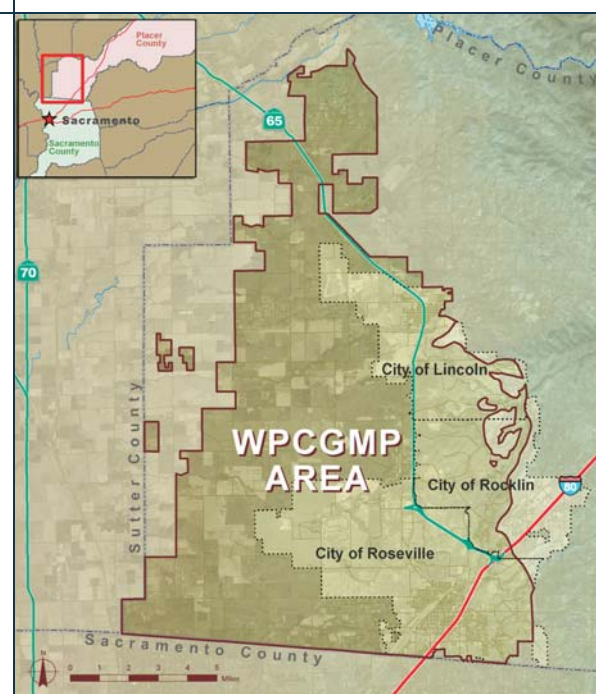
What is the Western Placer County Groundwater Management Plan?

The Western Placer County Groundwater Management Plan (WPCGMP) is a collaborative effort by local water purveyors to aid in maintaining a high quality, reliable groundwater supply. The WPCGMP will be a “living document” that can be readily updated and refined over time to reflect improved understanding of the groundwater basin as well as progress made in achieving the WPCGMP’s goals and objectives.

What is required in a GMP?

Requirements in Senate Bill 1938 guide the preparation of GMPs and contain numerous technical requirements and provisions which are briefly summarized as follows:

- A GMP contains an inventory of water supplies and describes water uses within a given region.
- A GMP establishes groundwater Basin Management Objectives (BMO)s that are designed to protect and enhance the groundwater basin.
- A GMP identifies monitoring and management programs that ensure the BMOs are being met.
- A GMP outlines a stakeholder involvement and public information plan for the groundwater basin.

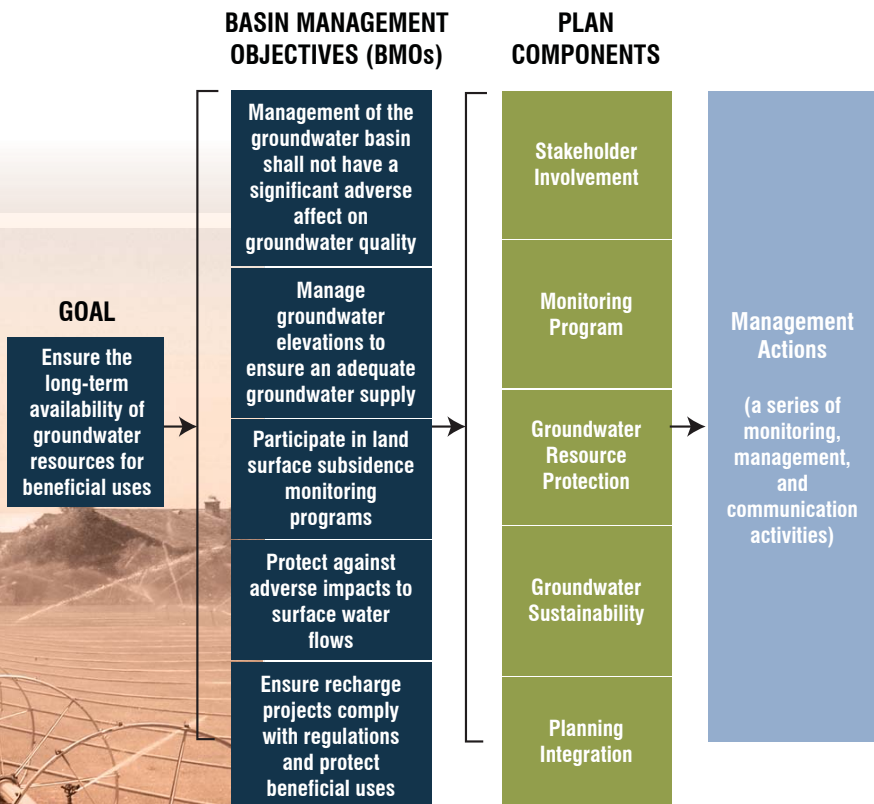


WPCGMP Area





Placer County



Why are we preparing a GMP?

The WPCGMP is being prepared to establish principles for mutual cooperation between the plan participants to guide the sustainable individual use of the shared groundwater basin.

Stakeholder Involvement

Plan participants of the WPCGMP will reach out to various stakeholders groups whose support and acceptance is important to the development and completion of this plan. Stakeholder involvement will help plan participants establish and maintain communication in the region as groundwater management activities are implemented and integrated. Stakeholders important to the development of the WPCGMP include:

- Placer County
- Regional Water Authority/Sacramento Groundwater Authority
- The Water Forum
- City of Citrus Heights
- City of Rocklin
- Neighboring Water Purveyors
 - Cal American Water District
 - Camp Far West Water District
 - Natomas Central Mutual Water Company
 - Nevada Irrigation District
 - Rio Linda/Elverta Community Water District
 - Sacramento Suburban Water District
 - South Sutter Water District
 - Yuba County Water Agency
- Agricultural Commission and the Farm Bureau
- Ranchers, major landowners, developers, and other interested parties

Implementing the GMP

Roseville, PCWA and Lincoln are currently developing an Implementation Agreement for the purpose of implementing the WPCGMP. The efforts associated with the implementation of this plan will be divided among the four plan participants. Currently, it is assumed that the WPCGMP will be adopted by each of the four plan participants' respective councils/boards in early 2007. This will immediately follow with WPCGMP implementation.

Plan Participant Strategy for Plan Implementation



Derrick Whitehead, P.E.
Director of Environmental Utilities
City of Roseville
2005 Hilltop Circle
Roseville, California 95747
tel. 916.774.5770
fax. 916.774.5690
dwhitehead@roseville.ca.us

Brian Martin, P.E.
Director of Technical Services
Placer County Water Agency
144 Ferguson Road
Auburn, California 95603
tel. 530.823.4886
fax. 530.823.4960
bmartin@pcwa.net

John E. Pedri, P.E.
Director of Public Works
City of Lincoln
640 Fifth Street
Lincoln, California 95648
tel. 916.645.8576
fax. 916.645.6152
jpedri@ci.lincoln.ca.us