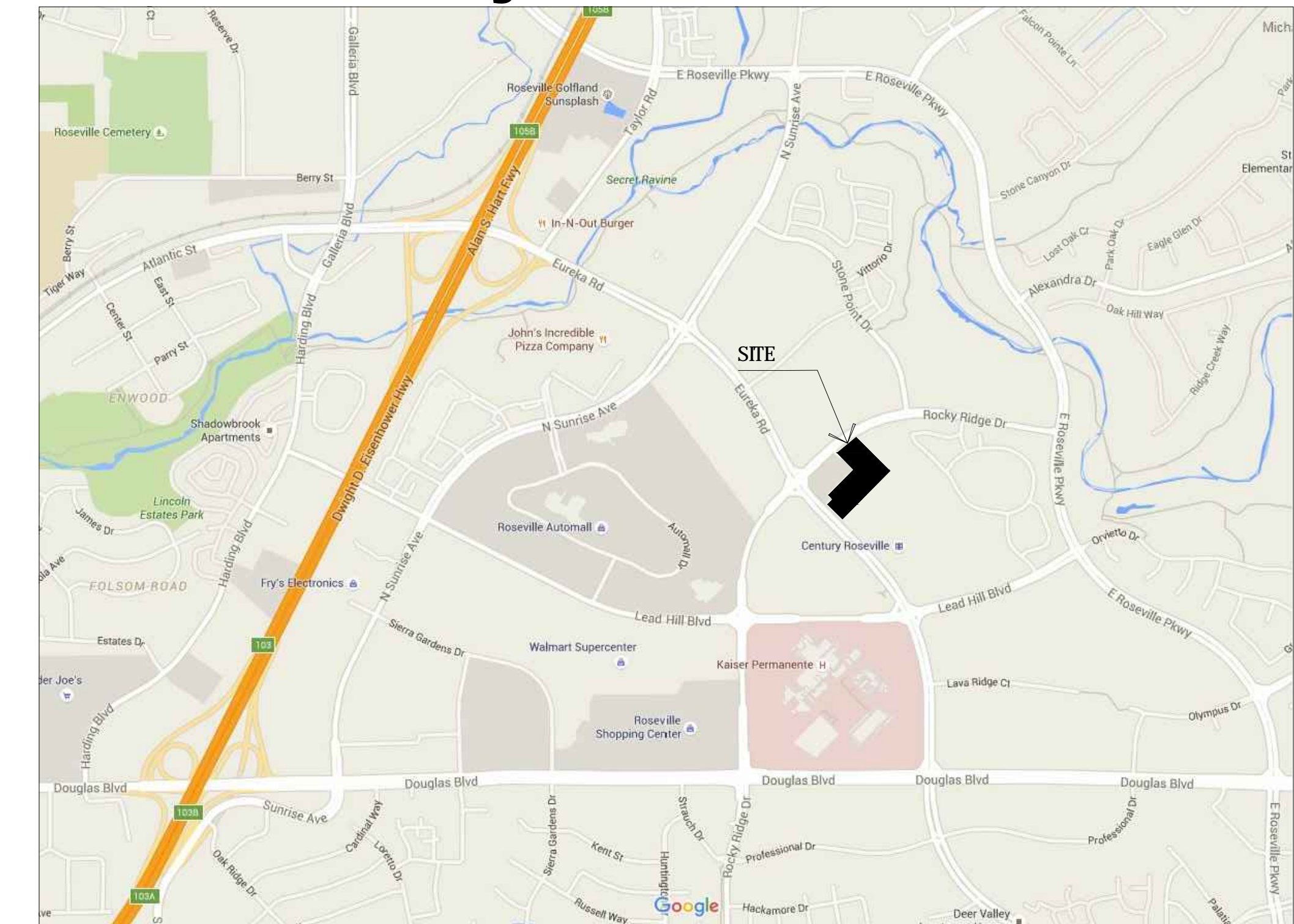
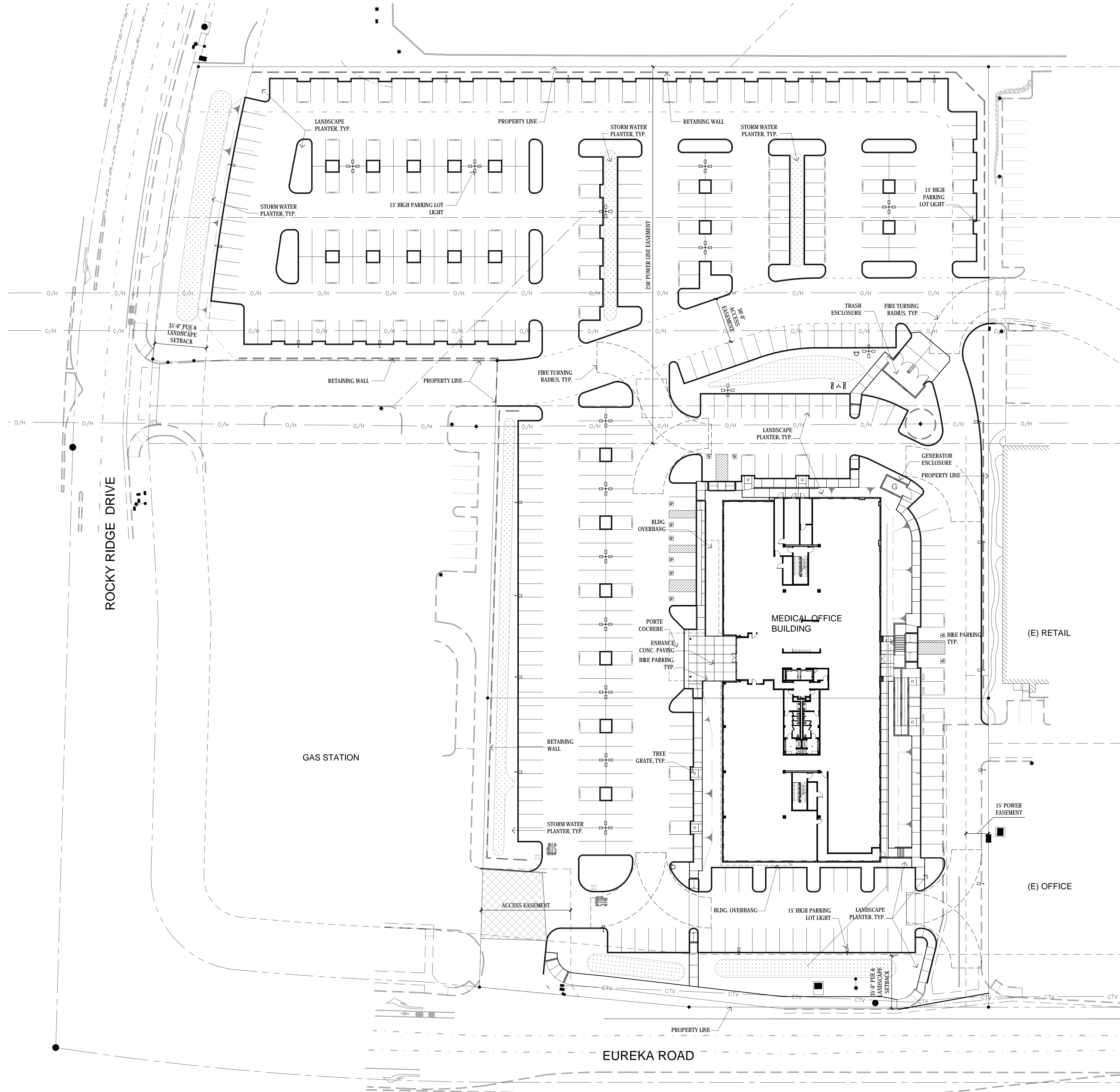


Initial Study - Exhibit A



VICINITY MAP
NTS

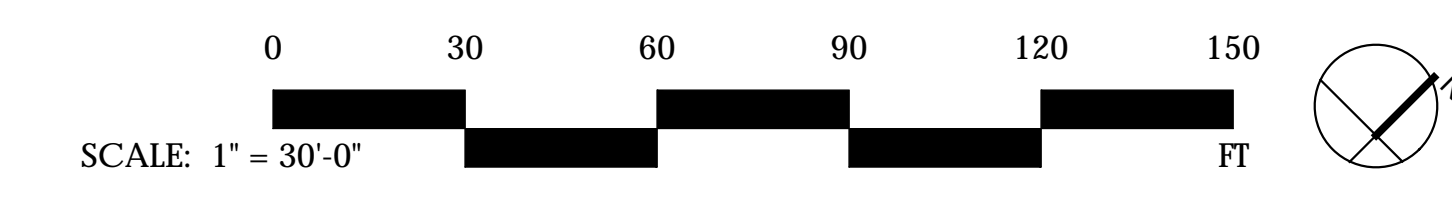


PROJECT DATA

SITE DATA	
SITE AREA:	5.7 ACRES
BLDG GROSS AREA:	75,000 SF
PARKING DATA	
PROPOSED PARKING STALLS COUNT	
ADA PARKING STALLS	7
ADA PARKING VAN STALLS	3
STANDARD PARKING STALLS	345
COMPACT PARKING STALLS	98 (22%)
TOTAL PARKING:	453 STALLS
	6 STALLS PER 1,000 SF
REQUIRED PARKING STALLS COUNT	
1 STALL PER 150 SF	460 STALLS
BIKE PARKING	
REQUIRED 5% OF TOTAL PARKING	23 SPACES
PROVIDED BIKE SPACES	24 SPACES



PARKING LOT LIGHT
GARDCO GULLWING LED ON 15' HIGH POLE



MEDICAL OFFICE BUILDING EUREKA ROAD @ ROCKY RIDGE

ROSEVILLE, CA

SITE PLAN

DATE: 01.17.2017
PROJECT NO: 1111-0009
SCALE:
SHEET:



LPAS

2484 Natomas Park Drive Suite 100 Sacramento CA 95833
916 443 0335 lpasdesign.com Architecture + Design