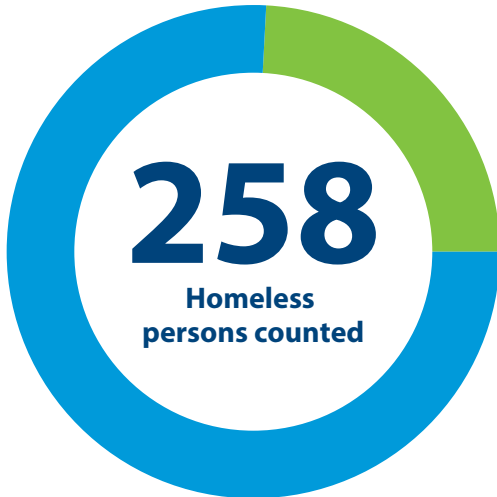


Homelessness 2019

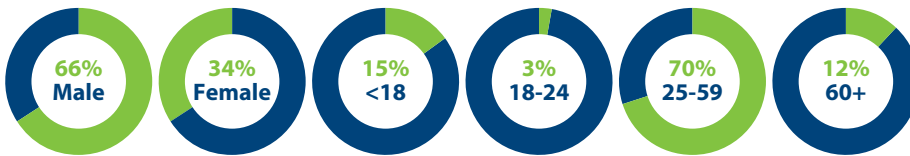
2019 Point-in-time count results

Each January, Placer County and its partners survey homeless individuals. A point-in-time count is only a snapshot reflecting those persons identified as homeless for one night and is not an absolute number. Many people move in and out of homelessness throughout a year.



24%
People in families (with children)

76%
Individuals/couples (no children)



118 Sheltered

46%



140 Unsheltered

54%



Chronically homeless

46%*

Defined as currently homeless for a year or more OR 4+ episodes of homelessness in the past 3 years totaling a year or more, AND a disability of long, continued duration.

Most said they lived in Placer County at least 1 year before becoming homeless:

75%*

25%*



38%*

With a serious mental illness



29%*

With a substance abuse disorder



24%*

Who have lived in foster care or group homes



10%*

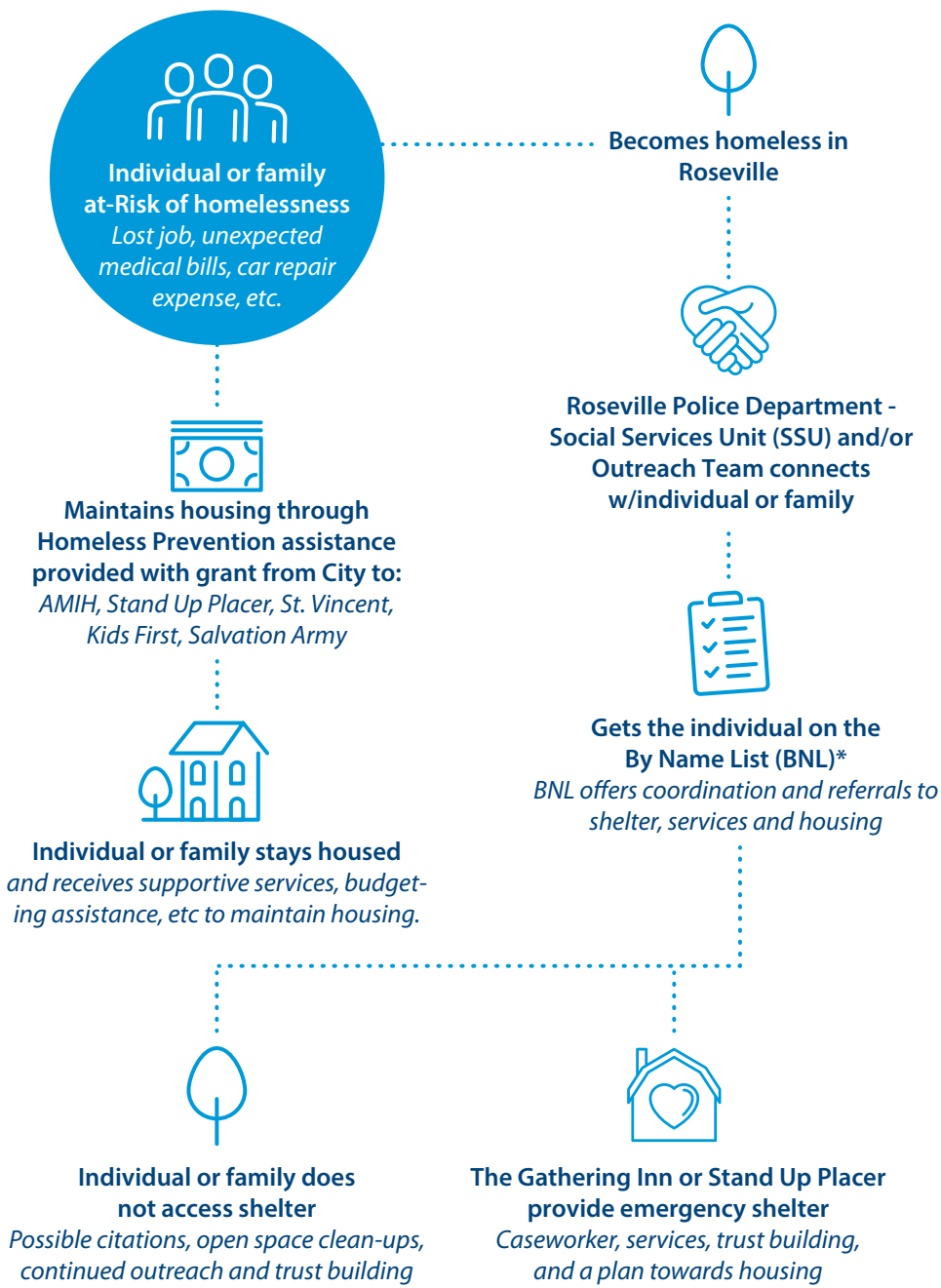
Currently fleeing domestic violence, sexual assault, dating violence or stalking situation



11%*

Veterans

Roseville Homeless Response Team



- Advocates for Mentally Ill Housing (AMIH)
- Apartment Managers
- County Housing Coordinators (AMIH and County)
- The Gathering Inn (TGI)
- KidsFirst
- Placer County Probation
- Roseville HomeStart by VOA
- Roseville Housing Authority (RHA)
- Salvation Army Roseville
- Roseville Police - Social Services Unit (SSU)
- St. Vincent de Paul
- Stand Up Placer (SUP)
- Volunteers of America (VOA)

Programs:

- Homeless Prevention and Rapid Rehousing
- Housing Choice Vouchers

City Internal Homeless Team:

- City Attorney's Office
- Communications
- Housing
- Parks & Open Space
- Social Services Unit:

Roseville Police - Social Services Unit (SSU) uses a balanced approach of services and enforcement, with the following team:

- Problem-oriented policing (POP) officers
- Sergeant for the unit
- Outreach workers
- Placer County Probation
- Family Mobile Unit
- Mental Health Crisis Team

Spectrum of Potential Housing and Services Outcomes

- Continuing as homeless and building trust with services (Outreach, SSU)
- Accessing Services (Ready to Rent, Mental Health Services, food, Healthcare, etc.)
- Accessing Emergency Shelter (TGI, SUP, Salvation Army Addiction Program)
- Accessing transitional Housing Programs (AMIH, Placer County, etc)
- Obtaining a Rental Assistance Voucher (Roseville Housing Authority, Placer County, AMIH)
- Obtaining an Affordable Housing Unit (City of Roseville, AMIH, other housing providers)
- Living with family or friends
- Utilizing ongoing Supportive Services to maintain housing